

*“Packaging is at the heart of societal and environmental challenges!”*

## WHAT IS PACKAGING?

Packaging is intended to contain, protect and preserve products, to allow their presentation, handling and distribution, while also providing information about the product and the company.

Packaging also corresponds to the action of putting a product in its packaging.

The two notions are closely linked and grouped together by the anglicism PACKAGING widely used in the industrial world.

The creation of a Packaging implies an eco-design approach engaged simultaneously with the creation of the product and corporate social responsibility (CSR).

## WHO IS A PACKAGING ENGINEER?

A packaging engineer is a project manager, able to manage different missions, in collaboration with people from different departments internally (Marketing, Purchasing, Quality...) but also externally (suppliers, subcontractors), in an international environment.

## THE MISSIONS OF A PACKAGING ENGINEER:

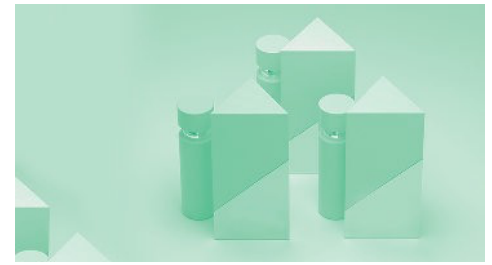
- The design, development and optimization of packaging by integrating an eco-design approach (recyclability, reduction at source, carbon footprint, etc.).
- Preparation of specifications, management of the graphic chain, choice of materials, technological, regulatory and competitive intelligence.
- Document management (CDC, Technical Documentation, Specifications, Legislation).
- Market analysis, search for suppliers, deployment of an ethical and responsible purchasing strategy.
- Quality, homologation and container-content compatibility tests.
- Continuous improvement, safety, tolerance optimization, traceability and logistics.

## THE DEPARTMENTS IN WHICH A PACKAGING ENGINEER WORKS



- Innovation and Research & Development (R&D)
- Packaging design (Design offices)
- Quality
- Procurement/Logistics
- Purchasing
- Production



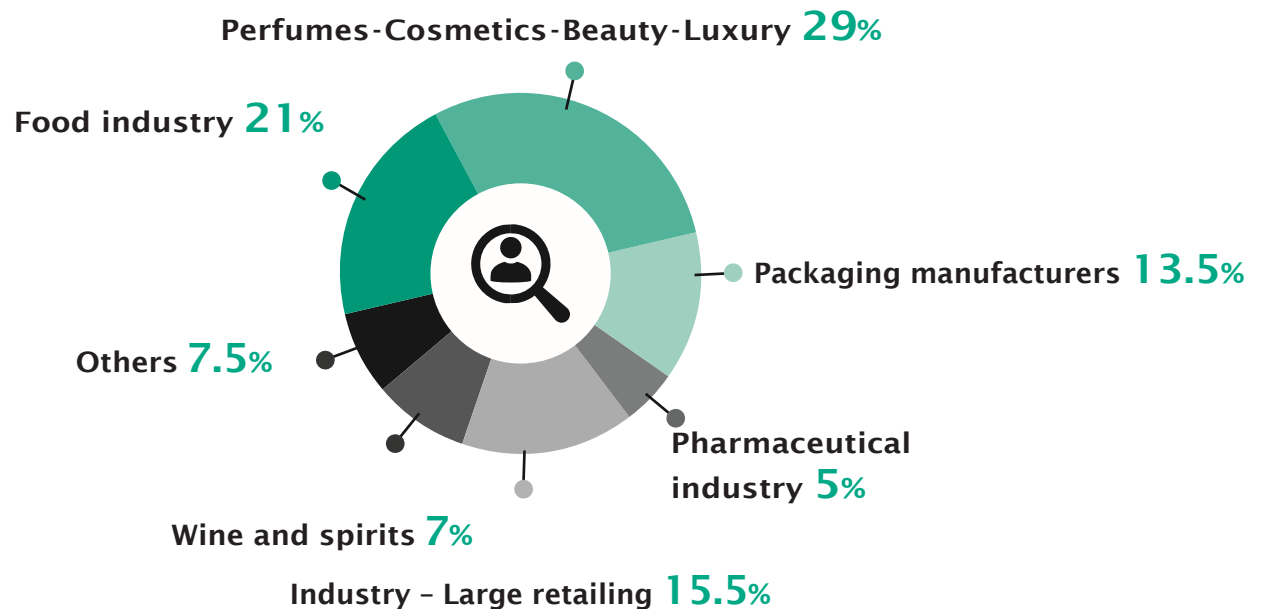


## ESIREIMS TRAINS ENGINEERS WHO HAVE:

- Solid scientific core knowledge and technical knowledge,
- Skills for management (project management), team leadership and dialogue with the various departments of a company,
- An appeal to other countries and cultures with the ability to communicate in several languages and to use communication tools,
- Training focused on social skills and expertise, providing flexibility and adaptability in jobs.

## JOBS AND CAREERS:

From packaging design to corporate management, the packaging professions offer diverse and exciting career prospects in a variety of sectors:



## OCCUPATIONAL INTEGRATION:

A multidisciplinary training close to industrial realities:

- Average time to find a job after graduation: 2 months
- First job average salary: 39 k€ annual gross (2022)
- First job abroad for around 20% of graduates
- Continuation of studies, PhD...

## CONTACTS

### Secretary:

Mrs. Sophie ZWEIFEL: 03 26 91 33 99 / sophie.zweifel@univ-reims.fr

### Packaging engineering coordinator:

Mrs. Florence FRICOTEAUX: 03 26 91 31 60 / florence.fricoteaux@univ-reims.fr

